

HOPE



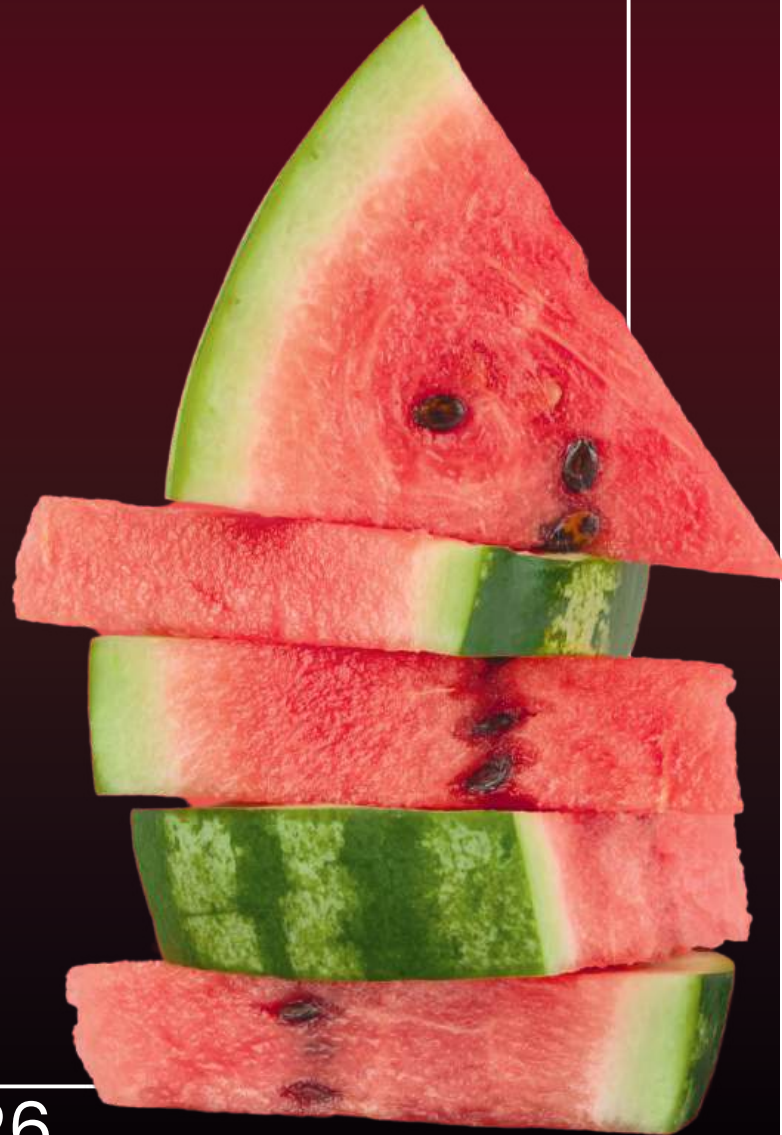
H E M P S T E A D C O U N T Y

RELOCATION & TOURISM GUIDE

TRAVEL
DESTINATIONS

COMMUNITY
EXPLORATION

ESSENTIAL
SERVICES



2026



Watermelon Festival



Train Day



Sparks Fly in July



Sports Tournaments



Fishing Derbies



Restaurants & Shopping



Museums & Tours



Winter Ice Rink

HOPE & HEMPSTEAD COUNTY



Visit hopeusa.com to learn more!



ARKANSAS'S GREAT SOUTHWEST ASSOCIATION
OFFICIAL PARTNER OF ARKANSAS TOURISM

Welcome To Hope And Hempstead County

On behalf of the Hope-Hempstead County Chamber of Commerce Board of Directors and myself, it is our pleasure to welcome you to Hope and Hempstead County. Whether you are relocating, visiting for the first time, or exploring opportunities to live, work, or invest here, we are delighted you are considering our community.

Hope is a place where tradition meets progress. We are proud of our rich history, strong agricultural roots, and our world-famous watermelons, but our community is much more than that. Hope and Hempstead County are home to hardworking individuals, dedicated leaders, and locally owned businesses that contribute to a vibrant and supportive community. From our historic downtown and cultural attractions to our parks, schools, and family-friendly events, there is something here for everyone.

The Hope-Hempstead County Chamber of Commerce, along with our Board of Directors, is committed to strengthening our local economy, supporting existing businesses, attracting new opportunities, and enhancing the overall quality of life for those who call this area home. We take pride in fostering connections, promoting tourism, and encouraging community involvement that helps Hope and Hempstead County continue to grow and thrive.

We invite you to get involved, support local businesses, attend community events, and experience firsthand the welcoming spirit that makes our area so special. If there is anything we can do to assist you as you settle in or learn more about our community, please do not hesitate to reach out.

We are grateful for your interest in Hope and Hempstead County and look forward to welcoming you personally.

Sincerely,
Christy Burns
Executive Director

Hope-Hempstead County Chamber of Commerce
Board of Directors

President Aley Mendoza, Heather Doucet State Farm
Vice-President Jonathan Crossley, Hope Public Schools
Treasurer Jacob Jones, Farmers Bank & Trust
Secretary Bren Yocom, SWARK.Today
Past-President Arnetta Bradford, Hebrews 11:1
Sharon Caldwell, Tailgaters Burger Co.
Nathaniel Holyfield, City of Hope
Jacob Eller, Pafford Medical Services
Judy Watson, Rainbow of Challenges
Maurice Henry, Hope Public Schools
Christi Zumwalt, Garrett Memorial Christian School
Stephanie Alvarez, Manpower

Welcome to Hope, a slice of the good life! We started as a small railroad town and grew into one of the largest towns in Southwest Arkansas. With I-30 on our doorstep, you have access to surrounding states and other large cities. When you enter into our town, you will see our southern charm from our downtown area to small shops sprinkled throughout the city.



While here, enjoy our restaurants and hotels that share our southern hospitality. Hope is the hometown of famous people such as President Bill Clinton, Governor Mike Huckabee and Paul Klipsch. Museums in our downtown area include the Clinton Birthplace National Site and the Klipsch Heritage Museum. We are also blessed to have an abundance of outdoor fun from our lakes and rivers to state and national parks within a short drive. Bring your fishing rod and hunting gear! Hope is also known nationwide for its large and sweet watermelons that we celebrate with our Watermelon Festival every August.

From our churches, civic groups and sporting events, we offer something for everyone. If you are already relocating or thinking about it, welcome to a place called Hope.

City of Hope Mayor, Don Still

Welcome to Hope, AR! As the Hempstead County Judge, I would like to extend a warm welcome to you and invite you to experience everything that Hope and Hempstead County have to offer. Hempstead County is home to many attractions, including President William Jefferson Clinton's National Birth Place Site and Historic Washington State Park. The county also has two wildlife Management Areas, Bois D'Arc Wildlife Management area, and Millwood Lake, which feature camping as well as hunting and fishing.



As County Judge, I am very excited to say that we are proud to be conducting business in our new Courthouse, which relocated to Downtown Hope in early 2022. Our new Courthouse has been fully remodeled and is considered one of the most prestigious Courthouses in the State of Arkansas! We are fortunate to have a variety of arts and entertainment, as well as several festivals and events throughout the year and I look forward to continued growth and new businesses with the revitalization of Downtown Hope.

There is so much more I could say about Hope, Hempstead County and our community, but I know that it won't take you long to figure out just how special it really is. Please feel free to contact me at (870) 777-7800, ext 101 if there is anything that I can help you with. Again, WELCOME to Hope, Arkansas! We are thrilled that you chose to visit us and hope you enjoy every minute of your stay. Hempstead County is a great place to visit.....and an even better place to live!

Hempstead County Judge, Jerry Crane



The 2026 Relocation and Tourism Guide is published by SWARK.Today in partnership with the Hope/Hempstead County Chamber of Commerce.





**HOPE-HEMPSTEAD COUNTY
CHAMBER OF COMMERCE**

The Hope-Hempstead County Chamber of Commerce is dedicated to strengthening member businesses and community involvement in order to stimulate growth and a positive town image within our local economy.

Our Chamber of Commerce Executive Director Christy Burns and the Chamber of Commerce Board of Directors, are here to serve our community and chamber members.

What you see in Hope today did not happen on its own, it is the product of the wonderful people of our community putting their time and efforts into supporting each other.

You will find the Chamber on a regular basis, planning and hosting events that will bring out community together. Watch for our Community Coffees, parades, Christmas events, Ribbon Cuttings, Business After Hours, and our renowned Hope Watermelon Festival.

The Chamber's achievements also include you, there are many ways



you can become involved including attending events, becoming an Ambassador, participating as a sponsor, becoming a Chamber member, or being a volunteer.

Becoming a member of the Chamber immediately aligns your business with other chamber member businesses and immediately strengthens your ability to succeed. When you become a member, you invest in your success, as well as the success of the entire Hope and Hempstead County region. The chamber offers networking opportunities throughout the year from weekly community coffees &

monthly business after hours to our annual meeting, a gathering of hundreds in our business community. Our online, searchable Chamber business directory has the potential to place your business in front of hundreds of thousands of potential customers.

For those thinking about moving to the Hope-Hempstead County area, the Chamber offers a relocation package that gives newcomers a comprehensive overview of living and working in the area. Our Relocation Packet is free of charge, packed full of beneficial information, complete with maps, things to do, places to see and more! This relocation package includes the Relocation & Tourism Guide you are reading now which is published by SWARK. Today and is in partnership with the Hempstead County Chamber of Commerce. If you are visiting our town or just thinking about moving to Hempstead County, give us a call or stop by our office to receive your packet today!

Contact us today to learn more about becoming a part of our family - a part of the Hope-Hempstead County Chamber of Commerce.



COMMUNITY BANKING

It's who we are.
It's what we do.

Local People | Local Decisions | Local Commitment
That's the Diamond Bank Difference.

- Checking Accounts
- Savings Accounts
- CDs/IRAs
- Credit Cards
- Online Banking
- Diamond Bank Mobile app
- Mortgage Loans
- Business Loans
- Agricultural Loans
- Personal Loans
- Auto & RV Loans
- Boat & Camper Loans



Diamond Bank[®]
www.diamond.bank

Hope | 400 South Main Street | 870-777-3200

MEMBER
FDIC



Chamber Staff

CHRISTY BURNS
Executive Director

KIMBERLY MCMAHAN
Administrative Assistant/
Membership Manger



Chamber of Commerce Staff



**SCAN
HERE
TO
VIST**

CHAMBER.HOPEUSA.COM



2026 BOARD OF DIRECTORS

Aley Mendoza
President



Heather Doucet State Farm

Arnetta Bradford
Past President



Hebrews 11.1

Judy Watson



ROCOH

Jonathan Crossley
Vice President



Hope Public Schools

Sharon Caldwell



Taligaters Burger Co

Maurice Henry



Hope Public Schools

Bren Yocom
Secretary



SWARK Today

Nathaniel Holyfield



City of Hope

Christi Zumwalt



Gurreet Memorial Christian School

Jacob Jones
Treasurer



Farmers Bank & Trust

Jacob Eller



Pafford Medical Services

Stephanie Alvarez



Matpower



HOPE-HEMPSTEAD COUNTY
CHAMBER OF COMMERCE

RELOCATING TO HEMPSTEAD COUNTY?

FIND SCHOOLS, UTILITIES & VOTER REGISTRATIONS HERE

CITY OF HOPE

City Hall - 206 W Avenue A
JR Wilson, City Manager
Don Still, Mayor (870) 777-6701
Public Works Dept. (870) 777-8644 Sanitation,
Streets, Landfill

HEMPSTEAD COUNTY

(870) 777-7800 Switchboard
400 S Washington St.
All courthouse offices:
Hempstead County Judge
Hempstead County Clerk
Hempstead County Assessor. Hempstead
County Treasurer, Hempstead County Sheriff
Hempstead County Coroner
Hempstead County Circuit Clerk

MAIL

U.S. Post Office in Hope
121 S. Laurel St. (870) 777-3500

ELECTRICITY

Hope Water & Light
105 N. Elm St. (870) 777-3000

Entergy 1-800-368-3749

Southwest Arkansas Electric Co-Op (870)
777-9176

NATURAL GAS

CenterPoint Energy 1-800-992-7552

WATER

Hope Water & Light
105 N. Elm St. (870) 777-3000

Southwest Arkansas Water System
(870) 722-6626

INTERNET & TV

SW AR Telephone (870) 653-8222

Hope Water & Light
105 N Elm St. (870)777-3000

Cablelynx Broadband
506 S. Walnut (870) 777-4684

AT&T 1-800-464-7928

Premier Broadband
809 N Hervey St. (870) 777-5369

AIRMAX
501 N. Hervey (903) 650-8311

CHAMBER OF COMMERCE

The Hope/Hempstead County
Chamber of Commerce
201 S. Main St. (870) 777-3640

DRIVERS LICENSE

State Revenue Office
116 E. 12th St. (870) 777-3131

LIBRARY

Hempstead County Library
500 S. Elm St.
(870) 777-4564

HUMAN SERVICES

AR Department of Human Services
116 N Laurel St.
(870) 777-8656

PUBLIC SCHOOLS - HOPE

Administration Hope Public Schools
601 W 6th St
(870) 777-2251

Clinton Primary School
601 Lakeshore Dr.; grades (K-4).
(870) 722-2723

Beryl Henry Elementary School
2000 S. Main
grades (5-6)
(870) 777-6222

Yerger Middle School
400 E. 9th St.
grades (7-8).
(870) 777-5134

Hope High School
1700 S. Main;
grades (9-12).
(870) 777-3451

PUBLIC SCHOOLS - BLEVINS

Blevins Public School District (K-12)
5954 Hwy. 29 North
Blevins, AR

District Administration
(870) 874-2801

High School (7-12)
(870) 874-2281

Elementary School (K-6)
(870) 874-2283

PUBLIC SCHOOLS - SPRING HILL

Spring Hill Public Schools (K-12)
633 Hwy. 355 West
Spring Hill, AR

District Administration
(870) 777-8236

High School (7-12)
(870)722-7430

Elementary School (K-6)
(870) 722-7240

The Discovery Center

4967 Columbus St, Washington AR
grades 5-12
(870)397-3416

PRIVATE SCHOOLS

Garrett Memorial Christian School
No. 1 Genesis Drive in Hope.
Administrative Offices
(870) 777-3256

Hope Methodist Church
Pre-school (ages 3, 4, and K)
2300 S. Main. (870) 777-8816

Rainbow of Challenges

500 S Main St
Hope, AR
870-777-4501
rocoh.org



[f FOLLOW US](#)

NEW TO HOPE AND HEMPSTEAD COUNTY? HELP IS A PHONE CALL AWAY FOR BASIC SERVICES

INSURANCE

Anderson-Frazier Insurance
910 S Main
(870) 777-3481 or (870) 777-4661

David Parker State Farm
807 East 3rd (870) 777-2929

Farm Bureau
120 N Hervey, (870) 777-9002

Farmers Insurance/Rodney Orr
1404 South Main (870) 722-5373

Farmers Union/Brandy Armstrong
109 N. Hervey (870) 777-8414

Garrett Insurance Agency
1500 West 3rd, (870) 777-6115

Heather Doucet State Farm
316 N Hervey, (870) 777-6198

Shelter Insurance/Trey Wright
1300 South Main (870) 777-5710

Victoria's Insurance
310 E. Greenwood St. (903) 556-5557

Young & Thornton/Tima Brown
903-701-1497

FUNERAL HOMES

Brandon's Mortuary
2912 AR-29, (870) 777-1666

Brazzel/Oakcrest Funeral Home
1001 South Main, (870) 777-6772

Herndon-Fuqua Funeral Home
403 South Main, (870) 777-4686

Hicks Funeral Home
407 South Hazel, (870) 777-8674

BANKS/FINANCE

Bank OZK
600 South Main
(870) 777-9999 or (870) 777-9888

Cadence Bank
200 South Elm, (870) 777-2313

Diamond Bank
400 South Main, (870) 777-3200

Farmers Bank & Trust
201 East Third, (870) 777-2363

Red River Credit Union
1513 Walmart Drive 1-800-822-3317

The First National Bank of Tom Bean
301 N. Hervey St., (870) 777-5577

REAL ESTATE

Hollis Realty
1816 S. Main, (870) 722-6225

Lance and Associates
411 W Ave. C, (870) 777-1420

Sisson Real Estate
320 N. Hervey, (870) 777-6821

Walker Realty
622 N Hervey St. (870) 777-4700

ACCOUNTING

Burke & Walker
3337 Hwy 29 N (870) 777-8258

Dowd & Company
507 S Main St., (870) 777-8284

H&R Block
910 N Hervey, (870) 777-5416

Stefani Espinoza
114 S Elm St., (870) 354-3213

GROCERY

Jaco Meats
5689 Hwy 29S (870) 397-4189

Piggly Wiggly
1704 E 3rd St., (870) 777-8831

Super 1
909 N Hervey, (870) 777-5500

Tienda San Luis
621 W 3rd St., (870) 474-5020

Wal-Mart
2400 N Hervey, (870) 777-5500

EMPLOYMENT SERVICES

Express Employment Professionals
204 N Hervey, (870) 773-1313

Manpower
809 N Hervey, (870) 777-0365

HERNDON - FUQUA FUNERAL HOMES

HOPE - PRESCOTT - GURDON
(870) 777-4686
403 S Main • Hope, AR 71801
herndonfuquafuneralhome.com

Our family serving your family for all your funeral home needs
We offer Pre-arrangements, Burial insurance, Headstones, and Cemetery spaces

TOWNSEND OUTDOORS

2301 S MAIN ST, HOPE, AR 71801
(870) 777-3330

WEEKLY DEALS!

HOME, HUNTING, SHOOTING, FISHING, HUNTING OUTERWEAR

PRIVATE MEDICAL SERVICES

PHYSICIANS

Access Medical Clinic
405 S. 16th St. Suite A
(870) 777-0007

Christus Trinity Clinic
Dr. William Bennett, MD
Devin Shepard, MSN, RN,
FNP-C
805 Trinity Dr.
(870) 722-1020

Dr. Eve Covas, MD
205 Smith Road Suite D
(870) 777-8420

Dr. George Garrett
Southwest Arkansas
Regional Medical Center
2001 South Main
870-722-3800

Dr. Dale E Goins
Southwest Arkansas
Regional Medical Center
2001 South Main
870-722-3800

Fast Pace Health
2304 N Hervey
(870)474-9103

Hempstead County
Health Unit
808 W. 5th St.
(870) 777-2191

Southwest Arkansas Rural
Health Clinic
Southwest Arkansas
Regional Medical Center
2001 South Main
870-722-3800

Premiere Central Pediatrics
Dr. Sandra A. Sooman, MD
900 S Main St.
(870) 777-6002

Quality Care Pediatrics
W. Ladell Douglas, MD
100 E 20th Street Ste. B
(870) 777-2100

DENTISTS

Carter Family Dentistry
Robert Carter, DDS
800 S Main St.
(870) 777-5769

Coffee Family Dental
Trevor Coffee, DDS
901 S Elm St.
(870) 777-2577

Sitzes Family Dental
Lester Sitzes III DDS
1819 S Main St.
(870) 777-4466

Smiles of Arkansas
110 E 18th St.
(870) 777-6453

Dr. James K. Tyson DDS
411 W 16th St.
(870) 777-5861

HOSPITAL

Southwest Arkansas Regional
Medical Center
2001 S Main St.
(870) 722-3800
Open 24 hours

Southwest Arkansas Regional
Medical Center
Emergency Room
Open 24 hours
Dial 911

PHARMACIES

Express RX
717 S. Main St.
(870) 777-4643

Genoa Healthcare
300 E 20th Street
870-474-6758

Medi-Mart Pharmacy
1523 S. Main Street
(870) 777-5555

Walmart Pharmacy
2400 N. Hervey St.
(870) 777-1600

Walgreens Pharmacy
1004 W. Commerce Blvd.
(870) 777-4830

SERVICES

Centerwell Home Health
209 S Main St.
(870) 292-4937

Addus Personal Care
Physical therapy
203 S Main St.
(870) 474-6710

Heather Manor Nursing &
Rehabilitation
400 West 23rd Street
(870) 777-3448

Hope Haven Assisted Living
500 W. 23rd Street
(870) 777-8655

Hope Physical Therapy
1405 S Main
(870)777-9359

Texarkana Physical Therapy
Hope Branch
2510 N Hervey
(870)474-5060

Hourglass Aesthetics
Medical Spa & Wellness
Center
1100 S Main St
(870) 770-4467

Pafford Medical Services
3509 W. 16th Street
(870) 777-7660
EMERGENCY DIAL: 911

Southern Caregivers
Serving Hempstead County
501-463-9990

OPTOMETRISTS

My Eye Doctor
2510 N Hervey St.
(870) 722-2200



Unity
BAPTIST CHURCH WELCOMES
YOU
TO HOPE!
WE HAVE
A place
for you
402 SOUTH
HERVEY ST
HOPE, AR 71801



**SOUTHWEST ARKANSAS
TITLE COMPANY**
112 S MAIN | PO BOX 766
HOPE, ARKANSAS 71801
ARKANSAS
SWARTITLE.COM 870-777-6300



Live a life of happiness!
**Hope Haven
Assisted Living**
Independent Living with 24 hour care
Contact us!
870-777-8655
hopehaven@att.net
500 W 23rd St. Hope, AR
Sarah Brown, Administrator
Friendly compassionate staff,
exercise clubs, fun activities, spacious
rooms



Bankers with HEART

From personal checking and loans, to large commercial projects, our team is here to help!

Hope Downtown
201 East Third St.
Hope, AR 71801

Hope North Branch
617 North Hervey
Hope, AR 71801

MyFarmers iTeller in Hope
2103 South Main
Hope, AR 71801

MyFarmers iTeller ITM Live Teller Hours
Monday - Friday: 7:00 am - 7:00 pm
Saturday: 8:00 am - 3:00 pm



(870) 777-2363

MyFarmers.Bank



RENTAL PROPERTIES, LODGING & EVENT VENUES

RENTAL PROPERTY & APARTMENTS

Apartments of Hope
300 W. Avenue B
(870) 777-4522

Caney Creek Estates Mobile Home Park
1705 W 3rd St.
(870) 777-2035

Canyon Creek Apartments
303 W 23rd St.
(870) 722-2292

Emerald Village
2406 Rocky Mound Rd.
(870) 292-4140

Fulton Square Apartments
801 Mack St.
(870) 777-4162

Hope Square Apartments
904 S Grady St. #33
(870) 777-2693

Imperial Apartments
1305 S Main St.
(870) 703-3536

Live Oak Apartments
1806 N Hazel
(870) 777-3389

Pleasant Ridge Apartments
1305 E 3rd St.
(870) 722-5114

The Peaks at Hope
2206 Bill Clinton Dr.
(870) 722-2964

LODGING

Red Roof Inn
2205 N. Hazel
(870) 777-4676

Best Western of Hope
1800 Holiday Dr.
(870) 777-9222

Coulter Farmstead
209 Gray St.
Washington, AR
(870) 826-5391

Hampton Inn & Suites
2700 N. Hervey
(870) 777-4567

Holiday Inn Express
2600 N. Hervey
(870) 722-6262

Hope Village Inn & RV Park
2611 N. Hazel
(870) 777-4665

Motel 6
1600 N. Hervey
(870) 722-1904

Relax Inn & Suites
1504 N. Hazel
(870) 777-0777

Super 8 by Wyndham
2000 Holiday Dr.
(870) 777-8601

Washington Grace Cottage
215 SE Carroll
Washington, AR
(870) 703-8256

MEETING & EVENT VENUES

Coulter Farmstead
209 Gray St. Washington, AR
(870) 826-5391

Community Center
Hope Fair Park
870-777-7500

Hampton Inn
2700 N. Hervey St.
(870) 777-4567

Hempstead Hall
2500 S. Main St.
(870) 722-8565

The HUB
Downtown Hope
(870)777-7500

The Log Cabin
Hope Fair Park
870-777-7500

Hope Hempstead County Chamber of Commerce
201 S Main
870-777-3640

The Venue at Twelve Oaks
4177 Hwy 29 N
(870) 703 4643

Timeless Traditions
474 Hempstead 7
(870) 397-3370

LANCE
& Associates
REAL ESTATE

870-777-1420



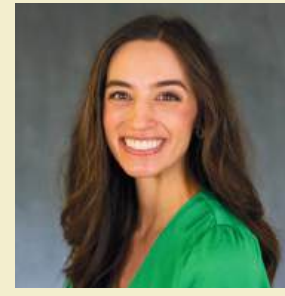
411 W Avenue C Hope, AR 71801



Steve Lance
OWNER/ EXECUTIVE BROKER



Lindsey Townsend
PRINCIPAL BROKER



Lizzy Hale
AGENT

*People you know.
People you trust...*



DINING IN HEMPSTEAD COUNTY

Amigo Juan
1300 N. Hervey St.
(870) 777-0006

Chicken Express
1701 N Hervey St.
(870) 292-4549

El Parian
905 Commerce
(870)703-7564

Little Caesar's
109 N Hervey St.
(870)722-5550

Pizza Hut
305 W 3rd St.
(870) 777-8659

TacoMex
1301 N. Hazel St.
(870)826-8860

Big Jake's BBQ
603 W. Commerce
(870) 777-1000

Chinese Panda
509 N. Hervey St.
(870) 722-2888

El Rinconcito
1100 N Hervey St.
(870) 722-8072

McDonald's
1601 N. Hervey St.
(870) 777-1928

Powell's Grocery
310 E. Greenwood St.
(870) 777-5779

Tailgater's Burger Co.
101 S. Main St.
(870) 777-4444

Big Mac's Barbeeque
2703 N Hazel
(870) 722-8011

Domino's Pizza
1002 S. Main St.
(870) 777-3400

Fat Tony's Pizza
912 N Hervey
(870)703-6002

Melon Patch Restaurant
104 S. Elm St.
(870) 777-8802

Sheba's Family Restaurant
1013 North Hervey St.
(870) 777-6266

Tamales Rosy
304 E. 3rd St.
(870)826-2911

Blueprint 11:1 Cafe
UAHT Campus
2500 S. Main
(870) 722-8142

Donuts Donuts
1002 S Main
(870) 210-2800

Hebrews 11:1 Coffee Shop
121 S. Main St.
(870) 722-8072

Mojo's Fish & Chicken
511 S Main
(870) 397-8307

Sonic
128 S. Hervey St.
(870) 777-4205

Tasty Donuts
912 N Hervey St.
(870) 722-5767

Bon's BBQ
303 E 3rd

Dos Caminos Bakery
112 S. Elm St.
(870)727-9987

Hiro Hiro Sushi
1110 N. Hervey St.
(870) 826-3779

Neighbors
1401 E. Third St.
(870) 777-8659

Subway
417 N. Hervey
and in Wal-Mart
(870) 722-5500

Taqueria Cilambalam
315 E 3rd St.
(870)331-7031

Botanera La Loma
410 N Pine St.
(870) 826-3087

Dos Locos Gringos
2406 N Hervey St.
(870) 777-3377

Hope Donuts
1714 E. 3rd St.
(870) 777-8000

Paradise Quick Stop
901 W. 3rd St.
(870) 777-9110

Sun's
5370 Hwy. 67 W.
Fulton, AR
(870) 896-2591

Waffle House
1407 N. Hervey
(870) 722-5033

Brew & Bite
803 W Commerce
870-703-9641

El Agaves
510 N. Hervey St.
(870) 722-4242

KFC
2017 N. Hazel St.
(870) 777-8677

Pedro's Hornet Hut
5456 Highway 371
Blevins, AR
(870) 874-1350

Tab's
2101 S. Main
Hope, AR 71801
(870) 777-8102

Wendy's
1615 N. Hervey St.
Hope, AR
(870) 722-5700

Burger King
1500 N. Hervey St.
(870) 777-4028

El Habanero
506 E 2nd St.
(870)703-3989

La Mangonada Neveria & Snacks
118 S Walnut
(870) 703-9872

Picket Fence
200 E 2nd St.
(870) 722-5967

Taco Bell
1501 N. Hervey St.
(870) 777-2668

William's Tavern
105 Carroll St.
Washington, AR
(870) 983-2890

Hempstead County is an AEDC Competitive Community

- 1500 + Acres of prime developable sites
- Due Diligence Completed
- Rail on site and 5 Major Highways
- Competitive Incentives
- Workforce Ready
- Infrastructure

HEMPSTEAD COUNTY ECONOMIC DEVELOPMENT

(870) 777-8485

EDC@HOPEUSA.COM

Ivan Smith
FURNITURE

870-777-8681
508 N Hervey St
Hope, AR



Text to win up to \$500.
Text IVAN25 to 40213

Saving you more on the look you want...

ANTIQUES

Bob's Antiques
113 S. Elm St.
Hope, AR 71801
(870) 703-2916

Elm Street
Market Place
121 S. Elm St. Hope,
AR 71801
(870) 777-9993

FLEA MARKET

Downtown Market
112 E. 2nd St. Hope,
AR 71801
(870) 397-1964

Flying Pig Flea &
Trade Days
403 S. Phillips Dr.
Hope, AR 71801

RESALE

Life & Hope AR
100 W 2nd St
Hope, AR 71801

ROC Enterprises
100 S Elm St.
Hope, AR 71801
(870)777-4501

Curiosity Corner
415 E 2nd
Hope, AR 71801

Shelley's Boutique
104 S Main St.
Hope, AR 71801
(870)331-2459

Patty's Cutesy Cloud
Walnut Street
Hope, AR 71801

T&C Resale Shop
301 S. Hazel St.
Hope, AR 71801
(870) 331-4670

Revival Rack
205 S Main, Hope, AR
870-292-8735

RETAIL & BOUTIQUES

Factory
Connection
906 N Hervey
Hope AR, 71801
(870) 777-1713

Martin's
914 N Hervey
Hope AR, 71801
(870) 777-2777

Hope Floral
501 S Main
870-777-6667

Rae-Tays
208 S Main St.
Hope AR, 71801
(870) 777-6699

The Little Things
Children's Boutique
106 S Main St.
Hope, AR 71801

Vintage Girls
107 S Main St.
Hope AR, 71801
(501) 416-9890

SEASONAL EVENTS

MAR 4-7	KHMA PWK BIRTHDAY BASH - 5th annual celebration in honor of Paul W Klipsch
MAR 20-21	58th ANNUAL JONQUIL FESTIVAL - In Washington Historic State Park, Washington, AR. Nine miles north of Hope on U.S. Hwy. 278. Named for native wildflower in Southwest Arkansas. Information at (870) 983-2698 .
APR 24-25	JAMES BLACK'S BOWIE HERITAGE FESTIVAL - Historic Washington State Park. Celebrating James Black, the bladesmith who forged the first Bowie Knife for Jim Bowie.
MAY 2	TRAIN DAY/TRADE DAY - In Downtown Hope at the Amtrak Depot. Celebrates the Cairo-Fulton Depot and the stopping of the Amtrak Passenger Train. Information at (870) 777-4444 . Trade Day is held at The Hub alongside with Train Day. Vendors available for shopping.
AUG 3	WATERMELON FESTIVAL PARADE -A great way to kick off the 50th annual Watermelon Festival
AUG 6-8	WATERMELON FESTIVAL -50th Annual Hope Watermelon Festival – Golden Jubilee! Fifty years of sweet traditions, community pride, and unforgettable summer fun. Come celebrate the golden moments with us! Info: hopemelonfest.com , hopemelonfest@yahoo.com , (870)777-2640
AUG 8	WATERMELON FESTIVAL CONCERT -Be sure to mark your calendar for the annual Hope Watermelon Festival Concert, a highlight of our community's biggest summer celebration!
NOV-JAN	ICE SKATING AT THE HUB - Downtown Hope at The HUB Thursday - Sunday specific weekends, \$5 with skates provided.
NOV 19	CHRISTMAS OPEN HOUSE - Saddle up for a festive Christmas Open House: Western Wonderland! Enjoy holiday cheer with a western twist, seasonal shopping, and hometown hospitality.
DEC 7	CHRISTMAS PARADE -The Hope Christmas Parade, held the first Monday in December, brings the community together with festive floats, twinkling lights, and holiday cheer, followed by a tree lighting ceremony and Cookies with Santa downtown.

SCAN HERE and view the Hope & Hempstead County Chamber of Commerce community calendar to find dates and times of more community events taking place this year!





**SPRING HILL
SCHOOL DISTRICT**

**633 SPRING LAKE ROAD
HOPE AR 71801
870-777-8236**

A Top Ranked School, with Top Ranked Teachers, Top Ranked Students and Top Ranked Organizations!



**FARMERS
INSURANCE**

Home • Auto • Life • Business

**870-722-5373
Rodney Orr, Agent**



Historic Downtown Hope

Historic Downtown Hope continues to make progress in business revitalization and historic preservation. Our historic district is now in its sixth year as an Arkansas Downtown Network Community under the Main Street Arkansas Program.

Locals and tourists alike enjoy shopping, dining, and spending time in downtown Hope. Retail development plays a vital role in our revitalization effort with a little something for everyone. If you are planning a day trip to Hope or here for an extensive visit you definitely need to visit downtown and enjoy the delicious food from one of our downtown eateries.

Downtown Hope also offers numerous events and activities throughout the year including Train Day/Trade Day, ice skating, KHMA Paul W Klipsch Birthday Bash, and you definitely don't want to miss Christmas in Downtown Hope! Downtown Hope also houses the Southwest Arkansas Arts Council which offers education and cultural opportunities and events.

The HUB in Pavilion Park is located in downtown Hope. The HUB is an outdoor event venue available to the community. It is the location of our Hope Farmers' Market. Also located in downtown Hope is the Visitors' Information Center, AMTRAK, and the Hope-Hempstead County Chamber of Commerce. Downtown Hope

now includes a pocket park which is a very enjoyable outdoor space for all, along with numerous murals that are great photo opportunities. Within walking distance, which includes a new streetscape, from the heart of downtown you can visit President

William Jefferson Clinton's Birthplace Home National Historic Site and the Klipsch Visitor's Center

Come, visit, explore Downtown Hope...we can't wait to have you!



martin's

WELCOME TO HOPE!

We're glad you're here!

Martin's welcomes you to our town! We're your one stop shop for shoes, clothing, gifts, accessories and more for the whole family! We've been serving Hope since 1959 and look forward to seeing you soon!





914 N Hervey St. (Across from Super 1 Foods)



Experience the Magic of Christmas in Hope, Arkansas!

The holiday season in Hope, Arkansas, is a truly special time, filled with festive traditions, dazzling lights, and community celebrations. The Hope-Hempstead County Chamber of Commerce, alongside the City of Hope work tirelessly to create a magical atmosphere for residents and visitors alike.

The season officially kicks off with our Christmas Open House, held the Thursday before Thanksgiving, when local businesses open their doors for holiday shopping and cheer. As December approaches, the entire community shines with festive decorations, and downtown windows come alive with displays matching our annual theme.

One of our most beloved traditions is Be the Light, hosted by the Chamber of Commerce,



bringing the community together to spread holiday joy through beautiful light displays. The City of Hope and the Beautification Committee enhance the festive spirit with decorations that transform our town into a winter

wonderland.

The celebration reaches its peak with the Hope Christmas Parade, held on the first Monday in December. Each year, the parade features floats, performances, and community spirit, all reflecting our special theme. In 2025, we celebrated “A Holly Jolly Game Night,” and in 2026, we look forward to a “Western Wonderland.”

Following the parade, the festivities continue downtown with the annual tree lighting ceremony, a cherished moment that brings friends and families together. To end the evening with warmth and joy, the Junior Auxiliary of Hope hosts Cookies with Santa, where children can share their holiday wishes and enjoy sweet treats.

We invite you to celebrate Christmas in Hope, AR, with us and experience the magic of the season. Whether you’re shopping, decorating, or enjoying our community events, you’ll find plenty of ways to make lasting holiday memories!

CANEY CREEK ESTATES

MOBILE HOME PARK

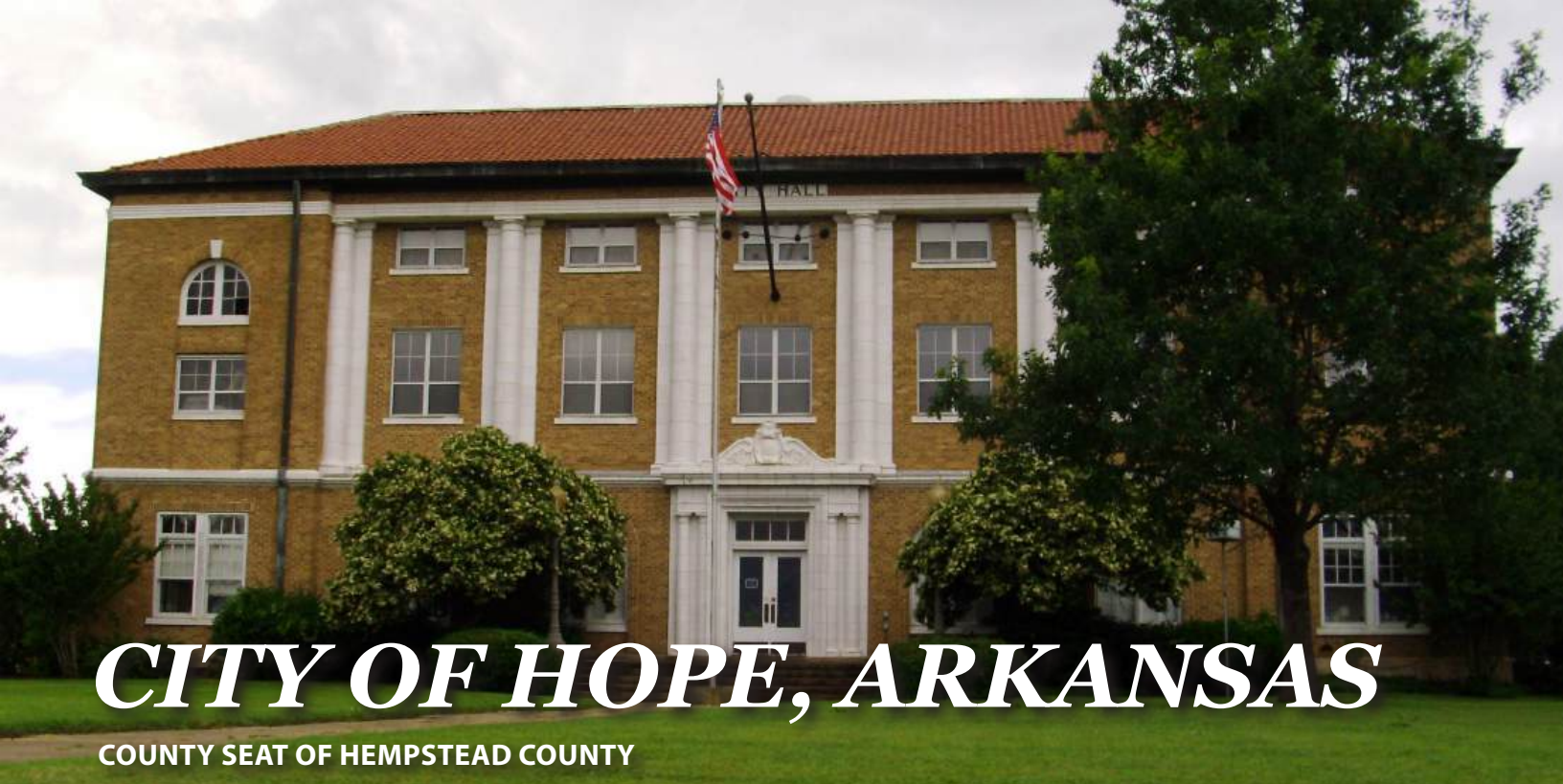
1705 W. 3rd St. - P.O. Box 35, Hope, AR 71802





870-777-2035

Family friendly community & affordable living.



CITY OF HOPE, ARKANSAS

COUNTY SEAT OF HEMPSTEAD COUNTY

Emergency: Dial 911 | Hope Police Dept. (870) 777-3434 | Hope Fire Dept. (870) 777-6702

Pafford EMS: Dial 911 | Hope City Hall: (870) 777-6701 | Hope Public Works: (870) 777-8644

Parks & Recreation: (870) 777-7500 | Building Services: (870) 722-2505

The City of Hope, Arkansas is the largest city in Hempstead County and serves as its county seat of government. Hope was incorporated in 1873, and it was famously named for Hope Loughborough, a daughter of a railroad executive, when rail service was first established in the area.

According to the most recent United States Census in 2022, Hope's population was 9,425, the 42nd largest City in the State of Arkansas. Located in southwestern Arkansas directly off Interstate 30, Hope is approximately 36 miles northeast of the Texarkana metropolitan area, and it is 112 miles southwest of Little Rock, the Arkansas state capitol. Hope is also driving distance from such cities as Dallas, Texas (approximately 209 miles), Shreveport, Louisiana (103 miles), El Dorado, Arkansas (79 miles) and Monroe, Louisiana (143 miles),

The City of Hope operates under a City Manager/Board of Directors form of government. The citizens of Hope elect, within seven geographic city wards, a director representing each ward over the course of four-year staggered terms, and the Board of Directors as a group appoint the City Manager, City Attorney, and City Clerk.

The Hope City of Board of Directors serve as the City of Hope's legislative branch of City government. The Board selects one of the directors to serve as Mayor. The

Mayor presides over Board meetings and serves as the ceremonial head of the City government as well as executing contracts and other legal documents as authorized by the Board or required by law. Don Still is presently serving as Mayor of Hope.

The City Manager acts as the City of Hope's chief administrative officer, overseeing the day to day operations of municipal government and eight city departments. J.R Wilson is the current City Manager of Hope, originally appointed on 28th day of February, 2023. He formally served as Chief of Police and Assistant City Manager.

The City of Hope operates eight city departments with approximately 126 employees in service of its residents, including Administration, Building Services/ Code Enforcement, Human Resources, Fire Department, GIS/ Technology, Parks and Recreation, Police Department and Public Works.

Hope City Hall, the administrative center of Hope's city government is located at 206 W Avenue A in downtown Hope.

Both the Hope Fire Department and Hope Police Department are professional and state-accredited units. Hope enjoys an ISO Class 3 fire rating. The Hope Fire Department includes 16 professional firefighters and has two fire stations.

The City of Hope, AR also has several commissions and citizen boards, including

Planning & Zoning, Tourism, Housing Authority, and Hope Water & Light Commission.

Hope Water & Light is the city-owned and operated utility company, but it operates independently under the oversight of the Hope Water & Light Commission with its own General Manager and a separate 40-employee professional staff.

Hope, Arkansas is famously known as the hometown of William Jefferson "Bill" Clinton, the 42nd President of the United States, who also served as Governor of Arkansas from 1979 to 1981 and again from 1983 to 1992.

Hope, Arkansas is also the hometown of former Arkansas Governor Mike Huckabee, who served 44th governor of Arkansas from 1996 to 2007. Huckabee is now known as a Fox News personality as well as best selling author. Mike Huckabee also ran for President twice, losing in the GOP primaries. Huckabee's daughter, Sarah Huckabee Sanders, was born and raised in Hope, and served as White House Press Secretary during the Trump Administration and is now the current Governor of Arkansas.

Other nationally prominent citizens from Hope include Clinton's former White House Chief of Staff Mack McLarty; attorney Vincent Walker Foster, Jr.; PGA golfer Ken Duke, actress/vocalist Ketty Lester, and actress Melinda Dillon.



HEMPSTEAD COUNTY GOVERNMENT

HOPE SERVES AS COUNTY SEAT, HOME TO OFFICIAL OFFICES

Hempstead County Courthouse Automated switchboard: All county offices at (870) 777-8400

Hempstead County Public Services are headquartered in the Hempstead County Courthouse located at 200 East 3rd Street in Hope. Public offices in the county courthouse are generally open from 8 a.m. until 4 p.m. Monday through Friday. County offices generally observe all major state holidays and offices are closed on those days.

The Hempstead County Judge's Office processes all county bills, maintains county roads, the courthouse and all county buildings and property. Jerry Crane is the current County Judge and acts as the chief administrative officer of the county.

The Hempstead County Clerk is Karen M. Smith. The county clerk's office issues marriage licenses, processes the county's payroll, pays the county's bills, registers voters and conducts early and absentee voting, and distributes county and tax revenue. The office also processes adoptions, probate cases and mental commitments.

The Hempstead County Circuit Clerk is Gail Wolfenbarger. This office is in charge of all felony court filings, processing of child support, recording of deed records and uniform commercial code filings. The office also archives all civil, criminal and juvenile court judgments.

The Hempstead County Sheriff's Office, not only enforces the law and conducts general police duties, but also serves as the county's tax collector. James Singleton is the Hempstead County Sheriff. This office is housed in and is in charge of the Hempstead County Detention Center at 312 S. Washington St., and is the county's civil process server.

The Hempstead County Tax Collector's Office is operated under the authority of the Hempstead County Sheriff's department, and is responsible for collection of personal and real property tax receipts.

The Hempstead County Treasurer's Office handles all county receipts and disbursements. The office also keeps track of the county's investments. Judy Flowers is the current County Treasurer.

The Hempstead County Assessor's Office assesses the value of all personal property in the county, all licensed property and business inventory for tax purposes. The office appraises and assesses all county real estate. The office also keeps a file of all county real estate which includes the assessed value and legal description of each property. The current County Assessor is Kim Smith.

Offices also located at the county courthouse include: The Hempstead County District Court responsible for all misdemeanor court filings including traffic citations, as well as felony first appearance and bond settings. The current district judge is Joe Short.

The Hempstead County Cooperative Extension Service is a branch of the University of Arkansas Cooperative Extension Service and is responsible for extension to the public of expertise in agriculture, home and family management and 4-H Club activity. Terrie James is Extension Staff Chair, and Kim Rowe is the County Extension Agent.

The Hempstead County Juvenile Intake Office is responsible for the filing and monitoring of juvenile court matters. The current juvenile intake officer is Carolyn Hawthorne.

Wilson's
FOUR STATES
FURNITURE

Shop Local. Easy Financing.

Your Home for Furniture, Mattresses,
Home Accents & More **Since 1978**

222 S Main St, Hope, AR • fourstatesfurniture.com

HEMPSTEAD COUNTY COMMUNITIES

OUTSIDE HOPE, SMALL TOWNS OFFER COUNTRY LIVING & RICH HISTORY

BLEVINS, population of 297, serves a large rural community. The town is named after Hugh Blevins, an early settler in the 1800s. The city is located at the junction of U.S. Highway 372 and Highway 29 in Hempstead County, 14 miles north of Hope. The town mayor is currently Bobby Steed.

FULTON, population 191, is located off U.S. Highway 67 on State Highway 355. The town was called Point Rocky at one time, and also named Fulton on Red River. The name was changed in 1840 to simply Fulton. It was named after William Fulton, the last governor of the Arkansas Territory. The current city government includes a town mayor, Henry Hale, and city councilmen.

MCNAB, population 30, is located on U.S. Highway 355. James T. Conway serves as mayor. McNab is considered the official city connected with the John W. Turk Jr., Power Plant, which was completed in 2010. The city was established 1809 and was named after Charles McNab who was a landowner in Miller County.

MCCASKILL, population 57, is located on U.S. Highway 371, approximately six miles west of the town of Blevins. The mayor of McCaskill is Kyle Sweat. McCaskill was named for a family of early settlers from North Carolina. They moved into the area just before the Civil War. A brother of the McCaskill family served in the Union Army.

OAKHAVEN, population 65, is located northwest of Hope on State Highway 32, and was established in World War II as the officer housing community for the Southwestern Proving Grounds. Les Patterson is the mayor.

OZAN, population 81, is located on U.S. Highway 278 W., about 15 miles north of Hope. Ozan comes from a French word Aux Ane, meaning "at the Ane." It was corrupted by English speakers into Ozan. Ozan was at one time a large center for cotton production. David Stallsworth serves as the town mayor.

PATMOS, population 58, is located on State Highway 355, east of State Highway 29 South. Patmos is a Biblical name. The city was also

considered to be named Luzon or Dura.

PERRYTOWN, population 232, is located about three miles east of Hope on U.S. Highway 67. The city mayor is Dave Rose. It was named after Perry Campbell, a well-known community activist and businessman for over 50 years. It is home to the Southwest Regional Office of the Arkansas Game and Fish Commission.

SPRING HILL, is accessible on State Highway 355 West on State Highway 29 and State Highway 174 S. It was originally known as the Spring Hill Township. It is located 12 miles east of the Red River and was named for a large water spring. Spring Hill is unincorporated.

WASHINGTON, population 180, is located nine miles north of Hope on U.S. Highway 278 W. It is a richly historical town, and is commonly known as Historic Washington because it is home to Historic Washington State Park. Paul Henley is the mayor of Washington and serves with four council members.



VISIT

tysonfoods.com/careers
type "Hope" in the search bar

Tyson is an Equal Opportunity Employer. All qualified applicants will be considered without regard to race, national origin, color, religion, age, genetics, sex, sexual orientation, gender identity, disability or veteran status.

Hourglass Aesthetics
Medical Spa & Wellness Center

1100 South Main Street Hope, AR
870-770-4467
hourglassmedicalspa.com

Board Certified Physician operated Medical Aesthetics Spa and Wellness Center. We offer non-surgical solutions for amazing cosmetic results and overall wellness, both inside and out.

Come Rejuvenate with Us

Y

YATES MAINTENANCE
 — HEATING & AIR —

We build comfort.

ELITE DEALER **HEI**
 HEATING & COOLING PRODUCTS

501.960.8971 • yatesmaintenance.com

HEMPSTEAD COUNTY CHURCH LISTING

ASSEMBLY OF GOD

First Assembly of God
322 N. Main St., Hope AR
870-777-4357

Word of Grace
2909 Hwy 278 E., Hope, AR
870-777-9668

BAPTIST

Anderson Baptist Springhill, AR
214 Hempstead 7, Hope, AR
870-777-5993

Antioch Missionary Baptist
799 Hwy 332, Hope AR

Bethany Baptist Springhill, AR
589 Hwy. 355 W., Hope, AR
870-777-2044

Bodcaw #1 Baptist Church
351 Nevada County 13, Emmet, AR
870-722-1972

Calvary Baptist Church
1301 West Ave. B, Hope, AR
870-7774650

Charity Missionary Baptist Church
5210 Hwy. 67 West, Fulton, AR
870-896-2670

Columbus Baptist Church
Hwy 73 West, Columbus
870-777-5368

Eastside Baptist Church
1101 N. Bonner St., Hope AR
870-777-8484

Emmanuel Baptist Church
216 Andres St., Hope AR

First Baptist Church
315 South Main St., Hope AR
870-777-5757

Washington Baptist Church
105 SE Jay St. Washington, AR

Fulton Union Baptist Church
201 Hempstead St., Fulton, AR
870-896-2597

Greater Camp Springs Baptist Church
913 Yellow Creek Rd.
870-983-2949

Garrett Chapel Missionary Baptist
Church
104 S. Ferguson St. Hope, AR
870-777-4001

Garrett Memorial Baptist Church
#1 Genesis Drive, Hope, AR
870-777-3256

Grace Baptist Church
4100 East Third Street, Hope, AR
870-777-2792

Greater Hope Missionary Baptist
Church
1201 West 3rd Street, Hope, AR
870-777-6957

Greater St. Luke Baptist Church
3945 Hwy. 67 West, Hope, AR
870-777-9314

Guernsey Baptist Church
4284 Hempstead 2 Hope, AR
870-777-8405

Harvest Baptist Church
430 Hwy 73 West Hope, AR

Haynes Chapel Baptist Church
300 Hwy 32 East, Hope, AR
870-777-8487

Landmark Missionary Baptist Church
412 Bill Clinton Drive, Hope, AR
870-331-4292

Lonoke Missionary Baptist Church
702 South Hazel, Hope, AR
870-777-6467

Macedonia Missionary Baptist Church
2333 Hwy 73 West, Columbus, AR
870-983-2718

Malbrook Baptist Church
1456 Hwy 195 North, Blevins, AR
870-874-2568

Mt. Cannon Baptist Church
804 Shearman St., Hope, AR

Mt. Hebron Baptist Church
295 County Road 1040, Hope, AR

Mt. Nebo Baptist Church
1197 Hempstead 57, Hope, AR

Mt. Olive Baptist Church
149 Hempstead County 246
Hope, AR

New Bethel Baptist Church
482 Hempstead County 132
Hope, Arkansas

New Hope Missionary Baptist Church
3725 Hwy 278 West, Hope, AR

Pleasant Springs Baptist Church
4604 Hwy 371
McCaskill, Arkansas

Providence BMA Church
5770 Hwy 29 S., Hope, AR
870-777-6299

Providence Memorial Baptist Church
7102 Hwy 67 East, Perrytown
870-777-5155

Providence Full Gospel Missionary
Baptist Church
3576 Hwy 278N, Hope, AR

Rising Star Baptist Church
1002 East Beech, Hope AR
870-777-5246

Riverside Baptist
384 Hillcrest Rd Fulton, AR

Shover Springs Baptist Church
110 Hempstead County 54
Hope AR
870-777-2919

Southside Baptist Church
2805 South Main St., Hope AR
870-777-6272

Saint John Baptist Church
1000 North Greening, Hope, AR
870-777-6714

St. John Baptist
Hwy 195, Deann, AR

St. Luke #2 Missionary Baptist
5296 Hempstead County 2
870-777-8835

Union Grove Missionary Baptist
Church
546 Hwy 195, Blevins, AR
870-874-2626

Unity Baptist Church
402 Hervey Street, Hope, AR
870-777-4078

Victory Baptist
2510 Springhill Rd.
870-397-3344

White Oak Grove Missionary Baptist
300 Hwy 332E
Deann, AR

CATHOLIC

Omega Gospel Ministries
2211 East 3rd Street, Hope, AR

Our Lady of Good Hope
301 South Walker Street, Hope, AR
870-777-3202

CHRISTIAN

First Christian Disciples of Christ
102 West Ave B Hope, AR
870-777-2594

United Christian Church of Emmet
407 West 4th Street, Emmet, AR

Spring Hill Christian Church
605 Hwy 299, Springhill, AR

Oak Grove Church
450 Hempstead County 54
Hope, AR

CHURCH OF CHRIST

Central Church of Christ
5707 Hwy 29 South, Hope, AR
870-777-3599

Hope Church of Christ
1815 East Third Street, Hope, AR

EPISCOPAL

St. Mark's Episcopal Church
301 South Elm Street, Hope, AR
870-777-3297

JEHOVAH'S WITNESS

Kingdom Hall of Jehovah's Witness
1709 North Hazel St., Hope, AR
870-777-5798

METHODIST

Avery Chapel United Methodist
661 Hempstead County 29
McCaskill, AR

Beebe Memorial C.M.E
412 North Hazel St., Hope AR
870-777-2112

Bethel AME
418 South Laurel St., Hope, AR
870-777-9376

Bingen United Methodist
434 Hempstead 27, Bingen, AR

Bruce Memorial United Methodist
5210 Hwy 371 N., Blevins, AR

Deann United Methodist
117 Hwy 195 North, Deann, AR

First United Methodist
301 S Elm St, Hope, AR
870-777-8816

Friendship United Methodist
4688 Hwy 195 N., McCaskill, AR

Hinton United Methodist
1518 Hwy 355E, Patmos, AR

Hope Methodist Church
2300 S Main
Hope, AR

Mt. Pleasant C.M.E
518 East 28th Street, Hope, AR
870-777-2690

Hope Floral
870-777-6667
501 Main St • Hope, AR 71801

The First National Bank of Tom Bean
Hometown Banking...with people you know
301N. Hervey St. Hope, AR
Phone: (870) 777-5577
Fax: (870) 777-5578
A Century of Service
Member FDIC

HEMPSTEAD COUNTY CHURCH LISTING

Mt. Zion C.M.E.
819 East Hickory St., Hope, AR
870-777-1722

Shorter Chapel A.M.E.
5809 Hwy 29 N. Blevins, AR

St. John United Methodist
814 North Hervey St., Hope AR
870-777-2570

St. Luke C.M.E.
6518 Hwy 278 North, Ozan, AR

Washington Methodist
124 Hwy 195 South, Washington, AR
870-777-3111

MORMON
The Church of Jesus Christ Of
Latter-Day Saints
3069 Hwy. 29 N., Hope, AR
870-777-8453

NAZARENE
Apostolic Holiness
317 West 23rd St., Hope, AR
870-826-6455

Bell Chapel Church of the Nazarene
5803 Hwy 371 N. Blevins, AR
870-874-2272

Church of the Nazarene
212 S. Walnut, Hope, AR
870-722-2889

First Church of the Nazarene
909 Rosston Rd., Hope, AR
870-777-2255

PENTECOSTAL
Church of God in Christ
Washington Temple
808 S. Edgewood St., Hope, AR
870-777-4192

Faith Temple COGIC
814 West Ave. B, Hope, AR
870-722-6074

First Church of God
713 N. Laurel Street, Hope, AR
870-777-3679

First Pentecostal Church of God
601 West 5th St., Hope, AR
870-777-9006

Hendrix Memorial Church of
God in Christ
409 S. Main St., Blevins, AR
870-767-4595

House of Praise Pentecostal
Church of God
601 West 5th St., Hope, AR
870-777-9006

New Life Church
4205 E. 3rd, Hope, AR
870-777-1114

Pentecostal Temple Church
Of God in Christ
901 Bell St. Hope, AR

PRESBYTERIAN
First Presbyterian
701 S. Main St.
870-777-3233

Roadside Church of
God in Christ
Hwy 278 Ozan, AR
870-983-2606

NONDENOMINATIONAL
A Place of Meeting
7302 Hwy 67 East, Perrytown, AR
870-777-2972

Hope Community
2110 Rocky Mound Rd., Hope, AR
870-777-1508

Living Water Fellowship
2985 Hwy 29 N. Hope, AR

New Hope Apostolic
713 S. Grady St., Hope, AR
870-777-5796

New Testament House of Prayer
257 Hempstead 177, Hope, AR
870-777-4022

Old Liberty Community Church
120 Hempstead County 10
Hope, AR

Renewed Faith Christian Center
600 Oak St., Hope, AR
870-777-6771

Straight & Arrow Path
513 S. Elm St., Hope, AR
870-722-9991

Quakers
870-777-5382

The Supreme Council of
The House of Jacob
617 E. Ave H, Hope, AR

Unlimited Outreach Ministry
3177 Hwy 32 N. Hope, AR

Word of Faith
5898 Hwy 29 N. Hope, AR
870-874-3327

Rafter J Cowboy Church
4913 Hwy 29 S. Hope, AR
870-703-4203

Southside Assembly
1121 Spring Hill Rd.

Church of God of Prophecy
Hope Family Church
C.O.G.O.P.

Iglesia de Cristo
1900 East Hempstead St.
870-729-9411

HOPE PUBLIC SCHOOLS



Home of the Bobcats

hpsdistrict.org

Hope for the Future



National Historic Birthplace Home OF FORMER PRESIDENT WILLIAM JEFFERSON CLINTON

On Aug. 19, 1946, Virginia Cassidy Blythe gave birth to her son, William Jefferson Blythe III, named for his father who was killed in an automobile accident three months before he was born. Young Billy Blythe grew up to become William Jefferson Clinton — the 42nd president of the United States. He and his mother lived with her parents in their home at 117 Hervey St. in Hope, where the future president spent the first four years of his life. Growing up in Hope, Clinton embraced the values of this small town. It was here that he learned early lessons in the importance of family, education, and racial equality — lessons that served him well in his public life and led him on a path to the nation's highest office.

The birth home was restored and

furnished with period pieces by the Clinton Birthplace Foundation, Inc. It opened to the public in 1997. President William Jefferson Clinton Birthplace Home National Historic Site (NHS) was established as a unit of the National Park Service in December 2010. The historic site includes the birthplace home, a visitor center (located in an adjacent historic home) and the Virginia Clinton Kelley Memorial Garden.

The interior of this modest home invites visitors to experience the house as Clinton did as a small child, from the stairs he hurried down on Christmas morning to the playing cards tacked to the kitchen window. President William Jefferson Clinton Birthplace Home NHS offers a glimpse into the ordinary home that helped shape his formative

years.

Former President Clinton attended the formal dedication ceremony for the historic site on April 16, 2011, along with Secretary of the Interior Ken Salazar and National Park Service Director Jon Jarvis. They were joined by more than 500 of Clinton's friends, family members, neighbors and supporters to commemorate the site's entrance into the National Park Service.

Begin Your Tour at the Visitor Center, located in an adjacent historic home, which includes interpretive exhibits about President Clinton's early life in Arkansas and a bookstore. Tours of the birthplace home are offered every half hour, with the last tour leaving at 4 p.m. Admission is free.

Third Street
AUTO SERVICE
COMPLETE AUTO SERVICE
Corner of West 3rd & Washington Hope, AR 71801
870-777-3281

Brazzel Oakcrest
THE FUNERAL HOME
1001 S Main St
Hope, AR 71801
870-777-6772
Ben Brazzel, Owner
Scott Brown, GMVP
"We Care"



Hope Watermelon Festival: Celebrating 50 Years of Melon Memories



Each August, the city of Hope, Arkansas, comes alive with excitement as the Hope Watermelon Festival welcomes thousands of visitors for a weekend of fun, food, and family-friendly entertainment. The 50th annual Hope Watermelon Festival, set for August 6–8, 2026, continues a beloved tradition that dates back nearly a century.

Originally held in the mid-1920s, the festival celebrated Hope’s claim to fame—its world-renowned, record-breaking watermelons. However, the event

came to a halt in 1931 due to the Great Depression. Decades later, C.M. “Pod” Rogers helped revive the tradition in 1977, growing it into one of the region’s most anticipated annual celebrations.

Over the years, the festival has expanded to offer something for everyone. Attendees can browse arts and crafts vendors, enjoy delicious festival foods, and experience live entertainment throughout the weekend. Families will love the Kidz Zone, featuring interactive activities and games, while car enthusiasts can admire classic and custom vehicles at the car show. Adventurous guests can put their skills to the test in the Watermelon Olympics, and, of course, everyone can enjoy ice-cold slices of famous Hope watermelons.

The festival’s grand finale is its Saturday night concert, a highly anticipated event that draws top musical acts and caps off the weekend with an unforgettable night of entertainment.

As the Hope Watermelon Festival celebrates its milestone 50th year in 2026, visitors and locals alike are invited to be part of this historic celebration honoring Hope’s most famous fruit. Whether you’re a first-time

visitor or a longtime festivalgoer, the Hope Watermelon Festival promises a fun-filled weekend and memories as sweet as the watermelon itself.

For more details, visit the Hope-Hempstead County Chamber of Commerce or check out the festival’s official website at hopemelonfest.com.





Amtrak Depot & Visitors Center

DAILY AMTRAK STOPS, EXHIBITION OF HOPE HISTORY

After a 36-year absence, passenger rail service returned to Hope in 2013 with the inauguration of two daily Amtrak stops.

Amtrak runs two passenger trains daily, with Train 21 departing at 5:09 a.m., traveling west, and Train 22 departing at 9:18 p.m., going east, according to the official schedule. That makes the Hope connection part of the national schedule, allowing passengers embarking from Hope to travel to major Amtrak destinations nationwide.

Boarding in Hope is at the Amtrak depot in the Hope Visitor and Information Center at the intersection of Division and Main streets, and taxi service is available in town. At present, Amtrak tickets must be purchased at amtrak.com online.

Since 1912, the Union-Pacific Railroad has been a major part of Hope, and helped bring Hope to life as it has so many other small towns in America. The railroad has shared its part of history, helping to bring presidential and vice-presidential candidates to Hope to stop and campaign, as well as famous musicians such as Duke Ellington, Count Basie, and the King himself, Elvis Presley.

Although, as the interstate highway system developed and improved in efficiency as well as the automobile becoming more affordable, safe, and available, the railroad in Hope gradually saw a decrease in the use of passenger trains. In 1971, the last official passenger train passed through Hope. The railroad continued to be used by freight trains and the depot was used as an office building until 1994 when it was closed.

In 1996, the City of Hope acquired the depot from the railroad company, and decided to use it as a starting point for the increasing number of tourists who were showing interest in Hope.

The Visitor Information Center, itself, showcases a significant exhibition of Hope history, including the early childhood of Hope native, former President Bill Clinton. In 2008, the VIC also acquired exhibit materials from the formative years of another former governor of Arkansas, Mike Huckabee.

The VIC also showcases special exhibits of the Department of Arkansas Heritage from time to time, and has an extensive collection of railroad memorabilia and history associated with the development of Hope.

The VIC is operated by the City of Hope Tourism Commission, with hours from 8:30 a.m. to 5 p.m., Monday through Friday, 9 a.m. to 5 p.m. Saturday, and 1 to 4 p.m. on Sundays.

Hope Outdoor Power and EQUIPMENT

217 East Third
Hope, AR 71801
(870) 777-8585

ECHO

STIHL

YOUNG & THORNTON
INSURANCE AND FINANCIAL SERVICES L.L.C.

Tima Brown, Agent
If it's insurance, I can help you!

903-701-1497
timab@ytinsure.com

- COMMERCIAL
- HOME
- AUTO
- COMPREHENSIVE EMPLOYEE BENEFITS

Here to assist you with all your coverage needs

Hope Parks & Recreation

PLAYGROUNDS, SPORTS, EVENT VENUES AND MORE

Located in the southwest part of town, Fair Park is one of three parks in the City of Hope parks system. The first property was acquired in October 1908 for \$1,600. This was 40 acres from Mr. J Hanegan. Since then, an additional 146+ acres has been added to Fair Park, giving a total area of almost 190 acres.

The Coliseum and Arena are facilities owned by the Southwest Arkansas District Fair and Rodeo and rented by the City of Hope during the times not occupied by the Fair.

Softball/Baseball Fields – Kelly Complex has 3 softball fields which are used for adult softball and available to rent. Kiwanis Complex, used for youth baseball also has 3 fields. Legion Field, which is located in the middle of the Fair Park is the home playing field for Hope High School Bobcat Baseball. There are 3 fields located at K-Park: Harry Hawthorne field, which is used for 8u softball and T-Ball, the Jack Williams Memorial Softball field and Lady Cat Field, home to the Hope High School LadyCats.

The Mike and Janet Huckabee Lake was built in cooperation with the Arkansas Game and Fish Commission. This 11 acre lake complex features a concrete walking trail completely around the rim of the lake, several

handicapped accessible fishing piers, concrete lined shores and a boat ramp. The lake is divided into two sections: The main part, which is 10.2 acres and a 1 acre derby pond that can be cut off from the main lake for fishing derbys. It is located within Fair Park.

The City of Hope RV Park, located within Fair Park has numerous 30 amp hook ups and limited 50 amp electric hook ups, all available with water. Fair Park also has a dump station conveniently located near the RV hook ups. Contact the Fair Park Office for rental information.

The Swimming Pool, located inside Fair Park, is typically open for the season around Memorial Day and closes around Labor Day.

Pavilions and Stages – 3 pavilions are available for rent and there is 1 pavilion that is first come, first serve inside the Fair Park. Additionally, there are two stages: the BancorpSouth, may be rented and the CMC Stage is used for large events only. Call the Fair Park office for reservations. Fair Park has several other facilities; including a community center and Log Hut, which are available for rent, two playgrounds, 3 tennis courts, basketball court and a 9-hole Disc Golf Course starting at the

swimming pool parking lot.

Northside Park began December 30, 1949 with 16 acres of land acquired from the Hope Civic Improvement Association, Inc. Additional lands have been purchased/donated since, giving a total area of almost 25 acres. This park has several facilities, including a baseball/softball field, 2 playgrounds, basketball courts, 3 pavilions and 2 outdoor restrooms. The Northside Park Community is located there as well and is available to rent for events.

The City of Hope Soccer Complex is located on State Hwy 174 South (Spring Hill Drive), just past the intersection with West 16th Street. This facility includes four lighted soccer fields, a skateboard park, pavilion, bathrooms and a concession stand. A couple of fields are also used for youth football.



Boll Weevil & Cotton Patch
870-896-2337 (Beer) 870-896-2222

Just Across the Red River Bridge on Hwy 67 South in Fulton
Your Best & Closest Choices to Hope for
BEER WINE & SPRITS



Hempstead County Outdoors

OUTSIDE OF HOPE, COUNTRY LIVING & RECREATION ABUNDANT

MILLWOOD STATE PARK



One of the best lakes in the state of Arkansas sits in Hempstead County's backyard, making Millwood Lake a "tree filled" fishing haven. Famous for bass tournaments, this 29,260 acre lake abounds in largemouth, catfish and crap-pie. Many trophy fish of over 10 pounds have been recorded, and 4 and 5 pound catches are common. Spring and fall offer

anglers great crappie fishing here, and catfish and bream fishing in summer. Facilities include 116 campsites: (113 including Preferred B, Standard B and three tent sites), picnic sites, a standard pavilion, self-guided nature trail and bicycle trail.

A marina offers souvenirs, gift items, groceries, bait, gas, fishing boats, canoes, pedal boats and hydro bikes. Slip rentals are available year round. Marina: (870) 898- 5334.

From junction 1-30 and U.S. 71 at Texarkana, travel 16 miles north on U.S. 71 to Ashdown, then go nine miles east on Ark. 32 to the park. Hunting is allowed in some areas around the lake, but not within 300 yards of any developed recreation area or structure, including dams

and levees. Duck blinds are permitted but must be temporary and removed within one week at the end of the season. No permit is required.

In addition to the lake, an 824 acre park is located on Mill-wood Lake. Each site has a picnic table and grill, and modern bathhouse with hot showers are located throughout the campgrounds. Campsites with no hookups are available. A trailer sanitary station is nearby. Contact: Millwood State Park Visitor Center: (870) 898-2800 Marina: (870) 898-5334.

HUCKABEE LAKES

The Mike and Janet Huckabee Lake continues to be significant for



numerous years, which is located in Hope at Fair Park. The 30 million gallon, 11-acre lake is nestled in a wooded area on a 15 acre site and is divided into two separate pools. The larger pool has an island



Edward Jones[®]
MAKING SENSE OF INVESTING

Steven Mullins, CFP, Financial Advisor
AR Insurance License -17152008

501 N Hervey St, Suite B
Hope, AR 71801
870-722-7071 • 844-362-8124
Fax 855-828-5808

steven.mullins@edwardjones.com
edwardjones.com/steven-mullins

and the lake boasts a boat ramp along with 10 wooden fishing piers scattered around the lake's perimeter. The Lake also features a walking/running path just under a mile in length around both pools on top of the levy which will be lighted in the near future to allow both fishing and strolling at night. A number of fishing derbys for the youth are held at the lake as well as fishing classes run by the city and state game commission annually. Contact: 870-777-7500.

SITZES/BOIS D'ARC WMA

Lester Sitzes III/Bois D'arc is located in Hempstead County, 16



miles south of Hope. This 13,626-acre area is composed of 5866 acres of State owned land and 7760 acres leased from International Paper and Potlatch timber companies. The area was established as a WMA in 1950's, The primary objective of this management area is to provide quality wildlife habitat and public hunting opportunities. The area consists primarily of bottomland hardwood habitats. This includes a 660 acre Greentree waterfowl area.

The lake went under reconstruction several years ago and is nearly back to normal levels. The lake had non-game fish removed and is being restocked with bass, blue gill, red ear, channel catfish and crappie. The Little Grassy Duck Area is a 150 acre moist-soil management unit. A system of levees and water control structures facilitate inundating the area for waterfowl habitat.

A forest management system provides excellent wildlife habitat. Bois d' Arc Lake and the associated creeks and sloughs are also home

to the American alligator. To get there take Hwy. 29 S out of Hope approximately 6 miles, take Hwy. 355 west toward Spring Hill, then follow Hwy. 355 into the area.

The west side of the area can be accessed from Hwy. 67 west of Hope. Hunting includes waterfowl, deer, quail, turkey, squirrel, and rabbits. See current regulations for seasons and permit requirements. Primitive camp sites are available around the lake and on the west side of the WMA.

Red Slough Waterfowl Rest Area closes to access early part of November and will reopen to access in mid February. It is open to archery deer hunting in the months of October to November.

Dr. Lester Sitzes III Bois D'Arc Lake is closed to hunting (fishing and non-hunting activities are allowed).

Boats are not allowed on the greentree waterfowl area 14 days before waterfowl season opens. Boat motors larger than 25 horsepower and airboats may not be used (except for Dr. Lester Sitzes III Bois d'Arc Lake). Boats are not allowed from 1 p.m.- 4 a.m. during duck season (including opening days of season segments), except on Dr. Lester Sitzes III Bois d'Arc Lake. Nonresident waterfowl hunters need a Nonresident Wildlife Management Area Waterfowl Hunting Permit. Boat ramps are located on Bois d'Arc Lake at Kidds Landing and Hatfield Landing.

For district information Contact: Jeffrey Taverner, Private Lands Biologist Wildfire Management Division (Office) - 870-777- 5580, (Mobile) 870- 331-7653,h (Fax) 870-777- 3032.

GRANDVIEW WMA

The Rick Evans Grandview Prairie Wildlife Management Area and Education Center is located in

Hempstead County, two miles north of Columbus. Contact: 1-877-



777-5580 This 4,885 acre multi-use area is owned by the Arkansas Game and Fish Commission and was established in 1997.

Prior to state control the site was both a cattle ranch and a hunting preserve. This multi-use area is managed for the protection, enhancement, and restoration of the blackland prairie. The area also consists of two lakes 30 and 77 acres in size. A specially stocked pond is reserved for fisherman aged 16-65. Grandview is home to a larger number of birds and other wildlife. Grandview Prairie represents the largest, contiguous tract of blackland prairie in public ownership in the nation. Deer, small game, and furbearers can be hunted.

The area is known for it's high quality white-tailed deer herd. See current regulations for seasons and permit requirements. It is unlawful to take or attempt to take water-fowl or to guide waterfowl hunters on Bayou Meto WMA without first obtaining a free Bayou Meto Wildlife Management Area Waterfowl Hunting and Guiding Permit which must be signed and in possession while hunting or guiding hunters.

For more hunting season dates and outdoor information in Southwest Arkansas, log on to www.agfc.com

Klipsch

HERITAGE MUSEUM ASSOCIATION, INC.

The original Klipsch & Associates museum was in operation before 1978 and was established by Paul W. Klipsch (PWK), and included items he made, bought at auction or was given. In 1979, Jim Hunter became the company Historian and remained until his retirement at the end of 2016. During the last year of Hunter's tenure, it became clear to Klipsch Group, Inc. (the successor to Klipsch & Associates) that no one else in the company would have the time nor the inclination to carry it forward, so the concept of a non-profit organization came up. In short time there was a volunteer working group that transformed into an Executive Committee, followed by a Board of Trustees and the KHMA was incorporated in the State of Arkansas on June 7, 2016 as a 501c3 charity. Creation of ByLaws, policies, and procedures were completed in 2016 and the Museum opened to the public on July 12, 2017.

The main Klipsch Heritage Museum Assoc., Inc. mission, is to restore, preserve, maintain and display Klipsch and Klipsch-related artifacts and archival materials for historic purposes,



as well as to conduct historical research and to host educational activities and events.

The Association currently oversees the Paul W. Klipsch library of technical journals, 5948 issues, over 400 reel to reel tape recordings, 60 feet thick of Paul W. Klipsch paper files, files consisting of literature, advertisements, newsletters and other materials used for marketing. Over 10,000 photos and slides and 1000+ museum artifacts have been cataloged as well.

Jim Hunter began work at Klipsch & Associates in the fall of 1978 as a transducer engineer. Over the next 38 years he held the positions of Transducer Engineer, Production Engineer, Design Engineering Manager, Project Manager, VP of Design Engineering, and unofficial company historian. PWK's collection of audio artifacts housed in a conference room immediately caught Jim's "collector

attention" and as PWK would say, "That was like waving a bull in front of a red flag!" Jim put the collection on steroids, as well as "sat before the master" innumerable times to absorb the man's colorful history spanning five distinct careers. He was also given free access to PWK's personal files dating to WWII.

The Paul W. Klipsch museum is located at 136 Hempstead 278, in Hope. In addition, there are three other locations in Hope. The Hope Airport "Steam Generating Building" from the WWII proving grounds days has been leased, and is the home of the museum's education center and PWK's library. In March of 2019, the Klipsch Visitors Center opened its doors to the public. The large historic house now known as the Klipsch Visitors Center is strategically located next door to the Clinton Birthplace Home National Historic Site. Visitors and locals alike will enjoy stepping inside a powerful piece of history that pays homage to Paul W. Klipsch, an American engineer and high fidelity audio pioneer.

For more information about the Paul W. Klipsch museum, visit their website at www.klipschmuseum.org, or contact their email info@klipschmuseum.org, or to reach someone in person, call

833-794-5287. You may also visit their facebook page @klipschmuseum.

HWL Hope Water & Light

Now offering both fiber optic high speed internet plus phone services to residential and business customers.

Call 870-777-3000

SCAN HERE

Find the price package that works for you!



SOUTHWEST ARKANSAS REGIONAL MEDICAL CENTER

Southwest Arkansas Regional Medical Center (SWARMC) is a community focused Critical Access Hospital serving Hope and the surrounding Southwest Arkansas region. Licensed for 25 inpatient beds, the hospital provides essential healthcare services close to home, supported by a skilled and compassionate team.

SWARMC offers a range of inpatient and outpatient services designed to meet the needs of a rural community. Services include a 24 hour Emergency Department, full service laboratory, and diagnostic imaging such as MRI, CT, general X ray, and DEXA scans for osteoporosis screening. Additional services include physical therapy and respiratory care, supporting recovery, rehabilitation, and long term wellness.

The hospital also provides skilled nursing care through its Swing Bed Program, allowing eligible patients to transition from acute hospital care to short term skilled nursing services without leaving

the community. This program supports recovery in a familiar and local setting.

Conveniently located at 2001 South Main Street in Hope, SWARMC is Medicare approved and accredited by DNV Healthcare, meeting rigorous standards that integrate the ISO 9001 Quality Management System with Medicare Conditions of Participation to ensure safe, high quality care.

The Southwest Arkansas Rural Health Clinic, located within the hospital, offers accessible primary care services for individuals and families in the region. The clinic accepts new patients and focuses on personalized care that supports long term health and wellness.

As a major employer in the City of Hope, SWARMC contributes to the local economy while providing critical healthcare services, including care for those in need. The hospital remains actively involved in community outreach, education, and partnerships that promote healthier lives throughout Southwest Arkansas.

At Southwest Arkansas Regional Medical Center, healthcare is rooted in trust, compassion, and connection. The hospital's guiding philosophy, Expert Care. Hometown Values., reflects a commitment to combining clinical expertise with the personal attention of a locally focused community hospital.

Heather
MANOR
Nursing & Rehab

**400 W 23rd St
Hope, AR. 71801
870-777-3448**

**24 hour skilled facility in a
country atmosphere
Located within minutes
from our local hospital**



University of Arkansas Hope-Texarkana: Building Bridges for Over 60 Years

The University of Arkansas Hope-Texarkana (UAHT) has served students and the community for over 60 years. Since opening our doors in 1965 as the Red River Vocational-Technical School, we've grown to serve over 3,000 students annually across our campuses in Hope, Texarkana, Historic Washington, Arkansas, and online. Today, UAHT offers more than 50 certificates and degree programs, early college opportunities, community education courses, and business and industry training to meet the needs of a diverse community.

Opportunities from Cradle to Career

At UAHT, we have something for everyone. We start with youth programs such as Kids' College, the Engineering & Manufacturing Camp of Creativity, and Camp Save-A-Life, which introduce children to the college experience through engaging, hands-on activities in STEM and healthcare.

For high school students eager to get ahead, UAHT offers exceptional opportunities. The Hope Collegiate Academy, in partnership with Hope High School, allows students to earn an Associate of Arts degree while completing high school—entirely free

of charge. Our Secondary Career and Technical Education Center also offers certifications in high-demand fields like Construction Technology, Welding, Certified Nursing Assistant (CNA), Emergency Medical Technician (EMT), and more. High school juniors and seniors can take advantage of these career-focused programs at no cost. UAHT also provides concurrent credit courses, giving students a head start on their college journey.

Pathways for Every Stage of Life

Whether enrolling right after high school or returning to school to enhance your career prospects, UAHT offers a wide range of programs to help you succeed. Our certificate and degree programs include options in high-demand fields like nursing, cybersecurity, construction technology, diesel technology, truck driving, solar energy, and even unique programs such as bladesmithing, fiber optic technician, funeral service, and more. Many of these programs can be completed in less than a year, making it easy to start your career quickly and affordably. With funding options like the ArFuture Grant, students can graduate prepared for high-paying technical jobs without financial strain.

For students planning to transfer to a four-year university, UAHT offers affordable and transferable associate degrees. Our partnerships ensure seamless transfers to Arkansas public universities, including the University of Arkansas at Fayetteville, where students can continue their education at UAHT's tuition rate. UAHT also has agreements with Texas A&M Texarkana, offering even more options for those pursuing a bachelor's degree closer to home. UAHT also offers two bachelor's degrees (Bachelor of Arts in K-6 Elementary Education and a Bachelor of Business Administration) that students can earn on the UAHT campus through our partnership with the University of Arkansas at Monticello.

Support Beyond the Classroom

UAHT doesn't just prepare students for the workforce; we enrich the community. We provide adult education, GED courses, and tailored business and industry training programs to meet specific workforce needs. Hempstead Hall, located on the Hope campus, serves as a hub for cultural enrichment, hosting events ranging from local training sessions to performances by Grammy Award-winning artists.

Affordable Education, Debt-Free Futures

UAHT is proud to offer some of Arkansas's most affordable tuition and fees. Our Hempstead Guarantee Scholarship ensures that students graduating from any high school in Hempstead County can attend UAHT at no cost for their first year. With over 125 institutional and private scholarships and a book rental program costing just \$20 per credit hour, most UAHT students graduate with little to no debt.

A Community of Excellence

At UAHT, student success is our mission. Small class sizes foster meaningful connections with instructors, while a variety of student organizations and campus activities promote personal growth and community engagement. Our state-of-the-art facilities, innovative technology, and world-class instructors ensure students receive a top-notch education in a supportive and welcoming environment.

For over 60 years, UAHT has been a bridge to the future for countless students and families. Let us help you build your future today! Learn more at uaht.edu.



Hempstead Hall, a multipurpose community conference center/auditorium based on the UA Hope campus, opened in 2013 and in a short time, has become a premier entertainment venue for all of southwest Arkansas. Over the past four years, the facility has hosted such world-class acts as the Little River Band, Travis Tritt, Sara Evans, Charlie Daniels, Lorrie Morgan, 38-Special, Trace Adkins, the Oak Ridge Boys, the Temptations, the Spinners, Clint Black, Ronnie Milsap as well as the Arkansas

Symphony Orchestra, the annual Hope/Hempstead County Chamber of Commerce banquet and membership meeting, and hundreds of conferences, banquets, dinners, awards events and area graduations. Custom designed by Little Rock architects, Hempstead Hall is a massive 64,000 square feet with 7,568 dividable square feet, and it features main theater seating for 1,600, banquet seating for 800, an outdoor amphitheater and dividable conference seating for small groups or large groups up to 1,200. Indoors

the facility features a full performance concert stage, a commercial kitchen, and being on the UA Hope campus, includes hundreds of parking spaces. Over 24,000 guests visit Hempstead Hall annually attending shows, graduations, civic club luncheons, or special events. Hempstead Hall is also a public venue available to rent for a variety of events from Arkansas conventions and professional conferences to local school functions and job training.



Historic Washington State Park

FORMER STATE CAPITOL THRIVES AS A POPULAR VISITOR'S STOP



WASHINGTON'S HISTORY

Sam Houston, Davy Crockett, and Jim Bowie each traveled through Washington before they fought for Texas independence. While in Washington, Bowie commissioned local blacksmith James Black to make a Bowie knife. Through the 1840s, Cherokee and Choctaw Indians traveled through Washington on their way to Indian Territory (present-day Oklahoma) due to the policy of Indian Removal. During the state's early years, Washington was a thriving community and a major service center for area farmers and

plantation owners. It was situated on the Southwest Trail, a major commercial route, and was also the county seat of Hempstead County. During the Civil War, the Confederate government of Arkansas fled from Little Rock to Washington. The 1836 Hempstead County Courthouse in Washington served as the state capitol from 1863 to 1865.

RESTORATION AFTER DIVISION

In 1929, the United Daughters of the Confederacy secured money from the state legislature to fund the restoration of the 1836 Hempstead County Courthouse. In 1958, a group of Washington citizens formed the Pioneer Washington Restoration Foundation to preserve the town's old structures and operated tours of some of the historic homes for fifteen years.

In 1973, the foundation donated property, buildings, and antiques, and Old Washington Historic State Park became the thirty-fourth Arkansas state park.

TODAY IN WASHINGTON

In September, 2006, the park's name was changed to Historic Washington State Park. The park offers guided tours of historic homes and structures, museums, and interactive and living history programs.

The park hosts several special events annually, including the Five-Trails Rendezvous in February and the Jonquil Festival in March. In November, visitors converge on the park for Civil War Weekend, and in December, the entire park is decorated in traditional nineteenth-century decorations for the Christmas and Candlelight celebration.

Historic Washington State Park is open all year from 8 a.m. until 5 p.m. daily and is closed only on Thanksgiving, Christmas Day and New Years Day. Throughout the year, special events are hosted by the park, including Shakespeare in the Park in the WPA-era gymnasium, and weekend concerts on the lawn of the 1874 courthouse in the summer at announced times; and, the historical production, "Trial By Jury," which recreates the first murder trial conducted in Hempstead County, also at announced times.

Washington's William's Tavern Restaurant serves Thanksgiving day buffet and southern-style lunches from 11 a.m. to 3 p.m. daily throughout the year. Located on US Highway 278, the park is nine miles north of Hope from Exit 30 off Interstate 30. For more information visit - www.HistoricWashingtonStatePark.com or call (870) 983-2684.

PAFFORD
MEDICAL SERVICES

People Focused. Service Driven.

Proud to serve Hempstead County!

paffordems.com

AMBULANCE

PAFFORD

PAFFORD

PAFFORD

In case of an emergency, dial 9-1-1.



JAMES BLACK SCHOOL

BLADESMITHING AND HISTORIC TRADES

HISTORIC WASHINGTON, ARKANSAS



James Black School

OF BLADESMITHING & HISTORIC TRADES

The University of Arkansas Hope-Texarkana James Black School of Bladesmithing and Historic Trades celebrates, preserves, and promotes the art of bladesmithing and historic trades, and the birth of the iconic Bowie Knife in Historic Washington. Students at the school will study the art and science of Bladesmithing, Forging, Handles and Guards, Damascus Steel, and more.

The James Black School of Bladesmithing and Historic Trades is unique in the University of Arkansas System and reflects the same quality and commitment to excellence in student learning that is the centerpiece of the missions of both the University of Arkansas Hope-Texarkana and the University of Arkansas System. Become a part of a campus where history, art, and skill are celebrated and preserved.

The James Black School is located at Historic Washington State Park, 601 Lawrence Street, Washington, Arkansas.

For more information, visit <https://www.uaht.edu/bladesmithing/>.



MAVERICK FLOORS & MORE

**810 South Main
Hope, AR 71801
870-397-0063**

CONTACT US FOR ALL YOUR
FLOORING NEEDS! WOOD, LAMINATE,
VINYL, CERAMIC, CARPET SQUARES





LEAVES OF HOPE



SOUTHWEST ARKANSAS ARTS COUNCIL

REGIONAL ORGANIZATION PROMOTES ARTISTS, CULTURAL EVENTS & CONCERTS

The Southwest Arkansas Arts Council, founded in 1986, operates as one of Hempstead County and the surrounding area's primary sources for cultural enhancement. SWAAC -- the Arts Council -- sponsors a wide variety of educational opportunities, as well as cultural experiences, and as a venue for artistic expression by local artists.

The aesthetic intent of the Arts Council is to bring exciting and vital arts experiences to the community. The Arts Council operates on one mission – to enrich the community through experience, expression and education in the arts.

The Arts Council sponsors up to 10 Artist in Education residencies each year in area schools, designed to strengthen student language, literacy, math and science skills through arts activities. Area school children use art to process, synthesize, analyze, and evaluate – all higher level learning skills.

As a downtown Hope entity, the Arts Council offers artists gallery space to showcase their talents. Gallery shows include local and

regional professional and amateur artists, exhibiting their works in such genres as painting, photography, mosaics, and woodworking.

In partnership with Hempstead Hall on the Hope campus of the University of Arkansas, the Arts Council brings world-class programming to Southwest Arkansas. Program series shows have included everything from the Arkansas Symphony to live, on-stage, ice skating.

Audiences have opportunities to experience top recording concert artists, live and on stage. The loyal support of our members helps SWAAC to continue programming that strengthens our community and enriches lives. Member benefits include discounts on tickets, workshops and classes, invitations to gallery exhibit opening receptions, monthly newsletter, members only events, notification of preferred customer ticket sales, tax deduction as allowed by the IRS. Student, Individual, Family and Business levels are available. To join or for more information, email swaac13@gmail.com or call 870.777.8200.

Enriching the community through the Arts

(870) 722-8200 | SWAAC13@GMAIL.COM

SW_Ark_Arts_Council

Supported by members and the Southwest Arkansas community

Join Today

Paid for in part by State and Regional Tourism Association Funds

Dawn of Hi-Fidelity Speakers
Klipsch Museum of Audio History
136 Hempstead 278 Rd., Hope, AR
Schedule a Tour - Email
info@klipschmuseum.org

Hear Klipsch Heritage Speakers
Klipsch Museum Visitor Center
403 W. Division St., Hope, AR
Monday-Thursday 10 a.m.-2 p.m.
www.klipschmuseum.org

GREETINGS FROM THE DAWN OF HIFI:
In 1946, inventor Paul W. Klipsch changed the audio industry forever by proving that it was possible to bring dynamic, realistic sound to the home. As an American audio pioneer and a proud member of the Engineering and Science Hall of Fame, Klipsch left an amazing legacy for you to discover. The Klipsch Museum of Audio History is a STEM-based non-profit dedicated to preserving and sharing Klipsch's technological discoveries, artifacts, and principles.



Southern Caregivers

Hometown Care from People You Know.



Local Hearts. Trusted Care.

Samantha Gummesson, RN
Co-Owner/Director of Operations



In-Home Personal Care

ACCEPTED PAYER SOURCES

Qualifying Medicaid
Arkansas Choices
PASSE
Veteran's Affairs
Aid & Attendance
Medicare GUIDE Program
Long-Term Care Insurance
Private Pay

SERVICES WE PROVIDE

Bathing, Toileting
Grooming, Dressing
Meal Preparation, Feeding
Mobility/Transfers
Medication Reminders
Light Housekeeping
Companionship
Running Errands,
Appointments



404 North Hervey, Suite B, Hope, AR 71801



Call For Appointment
501-463-9990

www.SouthernCaregiversAR.com

Follow Us Social Media   

BUILD YOUR BRIDGE TO THE FUTURE

EARN A BACHELOR'S DEGREE IN BUSINESS OR EDUCATION ON OUR CAMPUSES

OVER 50 DEGREES & CERTIFICATES!

TRANSFER TO UA-FAYETTEVILLE @ UAHT'S TUITION RATE.

AFFORDABLE TUITION

UofA

HOPE • TEXARKANA

870.777.5722 | uaht.edu |   

SECONDARY CAREER & TECHNICAL EDUCATION CENTER

- FREE college courses
- For high school juniors & seniors
- Hands-on experience
- Taught by college faculty

EARN A CERTIFICATE IN:

- Construction Technology
- Industrial Technology-Mechanical
- Information Technology Coding
- General Health
- Certified Nursing Assistant
- Emergency Medical Technician
- Basic Welding

HOPE

COLLEGIATE ACADEMY

"The opportunity to graduate with both my **high school diploma** and an **Associate's Degree** at the same time was simply too incredible to pass up."

-Ashlyn Courtney,
Collegiate Academy Graduate



LEARN MORE AT UAHT.EDU.